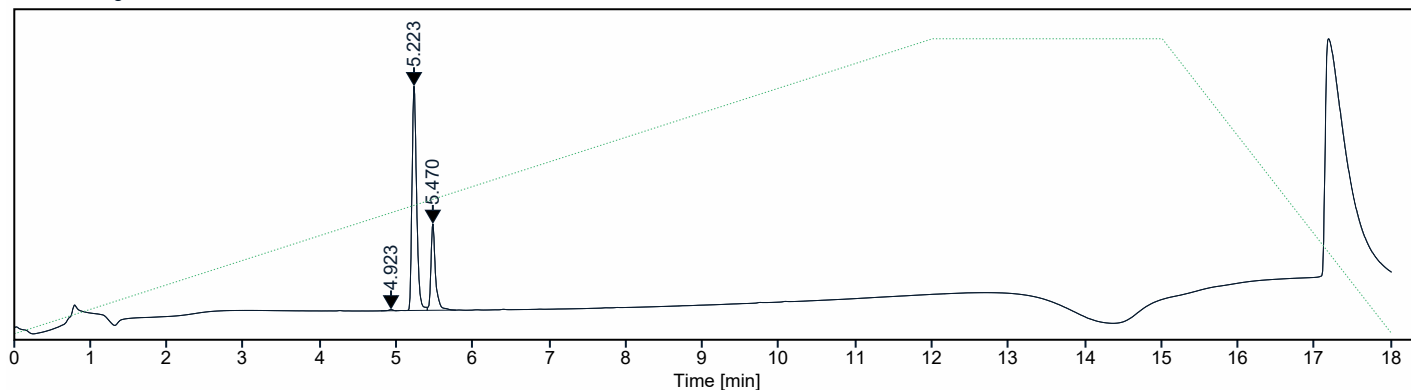




Instrument Name      LCMS01      Sample Name      LB-CVT-01-21

Injection Acq Method      QC 5 to 95 MeCN MW 100-800 ESI+-.amx  
Name

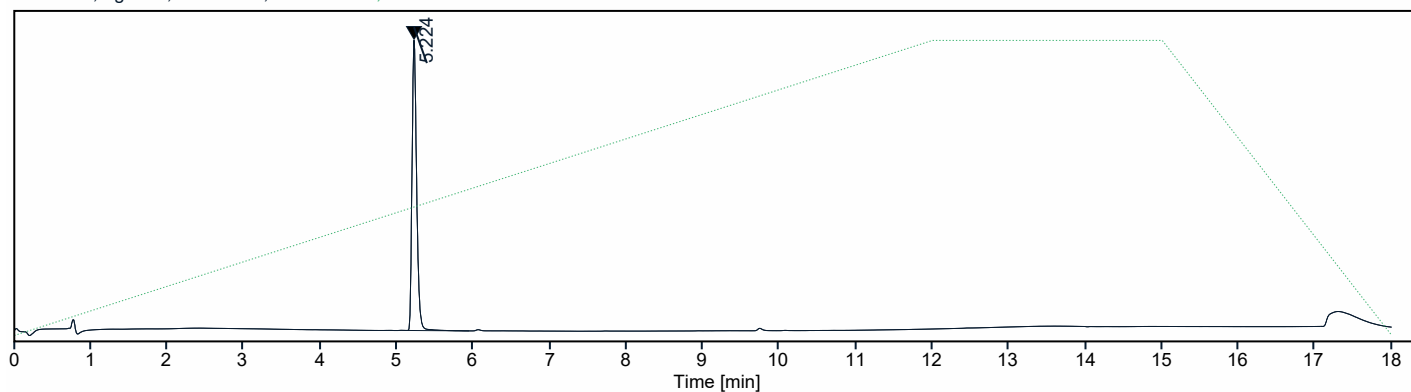
MWD1B,Sig=220,4 Ref=400,50 PMP1D,Solvent Ratio B



**Signal:** MWD1B,Sig=220,4 Ref=400,50

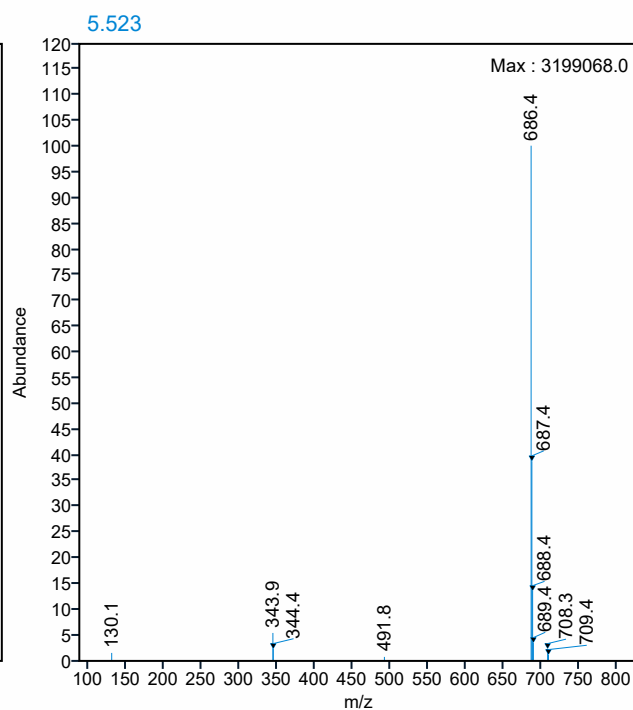
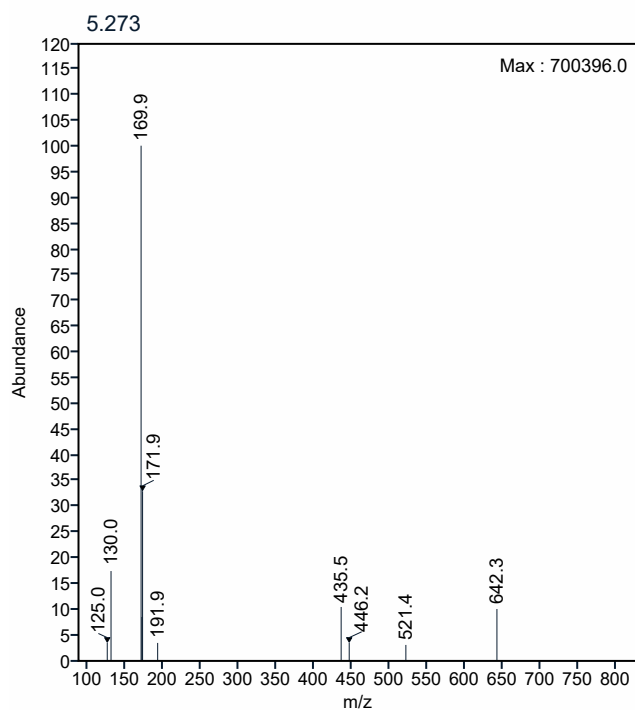
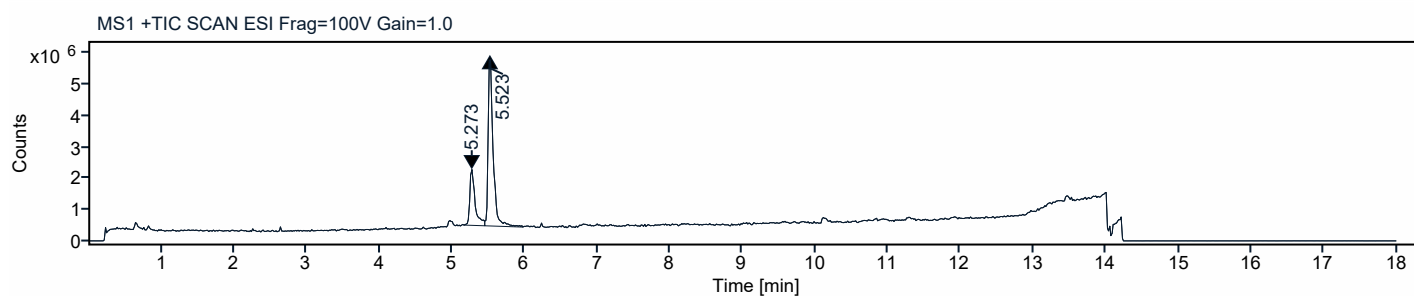
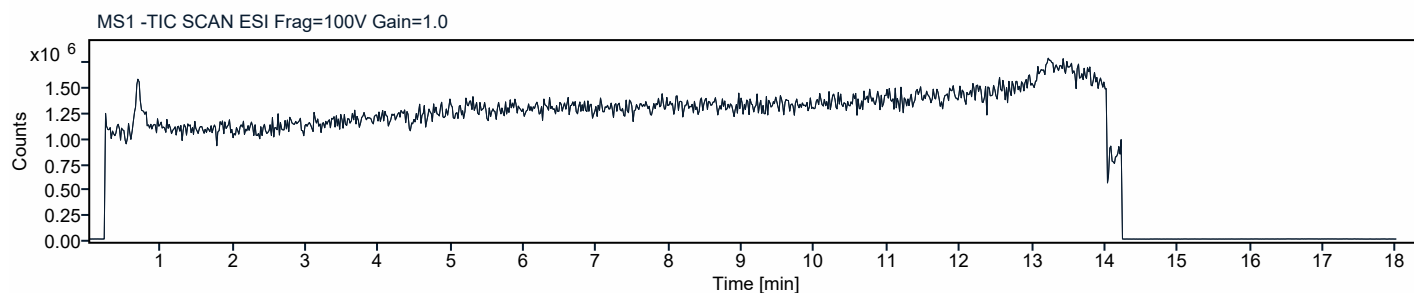
| RT [min] | Type | Width [min] | Area      | Height   | Area%   | Name |
|----------|------|-------------|-----------|----------|---------|------|
| 4.923    | BB   | 0.2080      | 10.8087   | 2.8124   | 0.3460  |      |
| 5.223    | BV   | 0.2932      | 2256.6071 | 535.6951 | 72.2354 |      |
| 5.470    | VB   | 0.3735      | 856.5474  | 206.1284 | 27.4186 |      |
|          |      | Sum         | 3123.9632 |          |         |      |

MWD1D,Sig=280,4 Ref=400,100 PMP1D,Solvent Ratio B



**Signal:** MWD1D,Sig=280,4 Ref=400,100

| RT [min] | Type | Width [min] | Area     | Height   | Area%    | Name |
|----------|------|-------------|----------|----------|----------|------|
| 5.224    | BB   | 0.8133      | 775.7763 | 184.7379 | 100.0000 |      |
|          |      | Sum         | 775.7763 |          |          |      |



Acquisition Method: QC 5 to 95 MeCN MW 100-800 ESI+-.amx

Path: D:\CDSProjects\CURVETX\Results\LCMS01-2021-08-17 17-53-58+01-00.rslt

## Quat. Pump Method

Flow: 0.500 mL/min  
Use Solvent Types: Yes  
Low Pressure Limit: 0.00 bar  
High Pressure Limit: 600.00 bar  
Max. Flow Ramp Up: 100.000 mL/min<sup>2</sup>



Primary Channel: Automatic  
Max. Flow Ramp Down: 100.000 mL/min<sup>2</sup>  
Module Display Name: Quat. Pump  
Module Type: G7104C  
Order: 1

Solvent Composition

| Channel | Ch. 1 Solv. | Name         | 1    | Used | Percent (%) |
|---------|-------------|--------------|------|------|-------------|
| A       | 100.0 %     | Water        | V.03 | Yes  | 95.00       |
| B       | 100.0 %     | Acetonitrile | V.03 | Yes  | 5.00        |
| C       |             |              |      | No   |             |
| D       |             |              |      | No   |             |

Timetable

| Time (min) | A (%) | B (%)  | C (%) | D (%) | Flow (mL/min) | Pressure (bar) |
|------------|-------|--------|-------|-------|---------------|----------------|
| 12.00      | 0.00  | 100.00 | 0.00  | 0.00  | ---           | ---            |
| 15.00      | 0.00  | 100.00 | 0.00  | 0.00  | ---           | ---            |
| 18.00      | 95.00 | 5.00   | 0.00  | 0.00  | ---           | ---            |

## Stoptime

Stoptime Mode: Time set  
Stoptime: 18.00 min